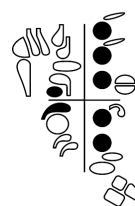
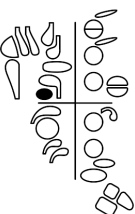
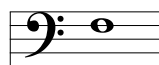
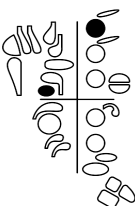
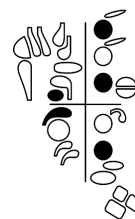
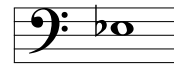
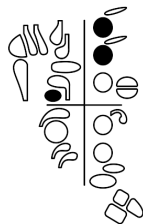
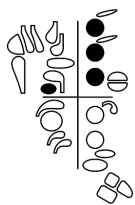
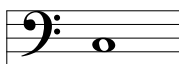
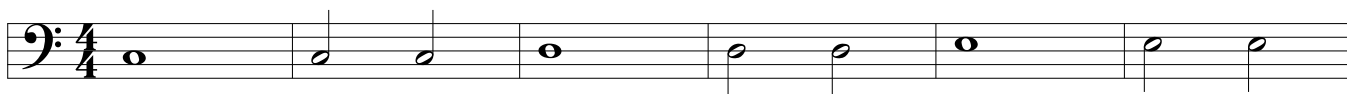


First Notes: Bassoon



1.



2.



3. Au Claire de la Lune



4. Andante

Two staves of musical notation in bass clef, 4/4 time signature. The first staff contains four measures: G2 (quarter), A2 (quarter), B2 (quarter), C3 (quarter), D3 (half), E3 (quarter), F3 (quarter), G3 (quarter), A3 (half), B3 (quarter), C4 (quarter), D4 (quarter), E4 (quarter), F4 (quarter), G4 (quarter), A4 (quarter), B4 (quarter), C5 (half). The second staff contains four measures: G4 (quarter), A4 (quarter), B4 (quarter), C5 (quarter), D5 (half), E5 (quarter), F5 (quarter), G5 (quarter), A5 (half), B5 (quarter), C6 (quarter), D6 (quarter), E6 (quarter), F6 (quarter), G6 (quarter), A6 (quarter), B6 (quarter), C7 (half).

5.

Two staves of musical notation in bass clef, 4/4 time signature, one flat. The first staff contains six measures: G2 (half), A2 (quarter), B2 (quarter), C3 (half), D3 (quarter), E3 (quarter), F3 (quarter), G3 (quarter), A3 (quarter), B3 (quarter), C4 (half), D4 (quarter), E4 (quarter), F4 (quarter), G4 (quarter), A4 (quarter), B4 (quarter), C5 (half). The second staff contains six measures: G4 (half), A4 (quarter), B4 (quarter), C5 (half), D5 (quarter), E5 (quarter), F5 (quarter), G5 (quarter), A5 (quarter), B5 (quarter), C6 (half), D6 (quarter), E6 (quarter), F6 (quarter), G6 (quarter), A6 (quarter), B6 (quarter), C7 (half).

6. Mary Had a Little Lamb

Two staves of musical notation in bass clef, 4/4 time signature, one flat. The first staff contains four measures: G2 (quarter), A2 (quarter), B2 (quarter), C3 (quarter), D3 (quarter), E3 (quarter), F3 (quarter), G3 (quarter), A3 (quarter), B3 (quarter), C4 (quarter), D4 (quarter), E4 (quarter), F4 (quarter), G4 (quarter), A4 (quarter), B4 (quarter), C5 (half). The second staff contains four measures: G4 (quarter), A4 (quarter), B4 (quarter), C5 (quarter), D5 (quarter), E5 (quarter), F5 (quarter), G5 (quarter), A5 (quarter), B5 (quarter), C6 (quarter), D6 (quarter), E6 (quarter), F6 (quarter), G6 (quarter), A6 (quarter), B6 (quarter), C7 (half).

7. Aura Lee

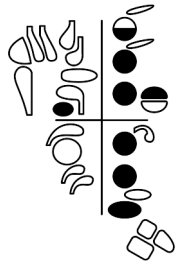
Two staves of musical notation in bass clef, 4/4 time signature, one flat. The first staff contains four measures: G2 (quarter), A2 (quarter), B2 (quarter), C3 (quarter), D3 (quarter), E3 (quarter), F3 (quarter), G3 (quarter), A3 (quarter), B3 (quarter), C4 (quarter), D4 (quarter), E4 (quarter), F4 (quarter), G4 (quarter), A4 (quarter), B4 (quarter), C5 (half). The second staff contains four measures: G4 (quarter), A4 (quarter), B4 (quarter), C5 (quarter), D5 (quarter), E5 (quarter), F5 (quarter), G5 (quarter), A5 (quarter), B5 (quarter), C6 (quarter), D6 (quarter), E6 (quarter), F6 (quarter), G6 (quarter), A6 (quarter), B6 (quarter), C7 (half).

8. First Song

Two staves of musical notation for 'First Song'. The first staff begins with a bass clef, a key signature of one flat (B-flat), and a 4/4 time signature. The melody consists of eighth and quarter notes with rests. The second staff continues the melody with similar rhythmic patterns.

New Note: G

A single musical staff with a bass clef showing a whole note G in the second space below the staff.



9. Easy Song

Two staves of musical notation for 'Easy Song'. The first staff begins with a bass clef, a key signature of one flat (B-flat), and a 4/4 time signature. The melody includes half notes and quarter notes with rests. The second staff continues the melody with similar rhythmic patterns.

10. London Bridge

A single staff of musical notation for 'London Bridge'. The staff begins with a bass clef, a key signature of one flat (B-flat), and a 4/4 time signature. The melody consists of eighth notes and quarter notes.

This is the Flicking/Venting range.
See the Technique Chapter, Flicking, for more information.

New Notes:
A-flat and B-flat

Two musical staves with a bass clef. The first staff shows a quarter note A-flat (A with a flat symbol) in the second space below the staff. The second staff shows a quarter note B-flat (B with a flat symbol) in the second space below the staff.

